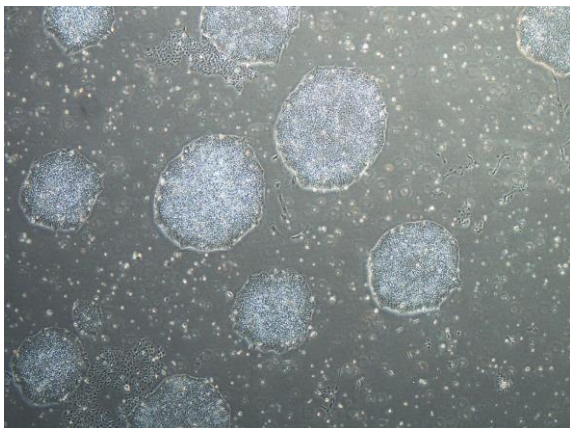
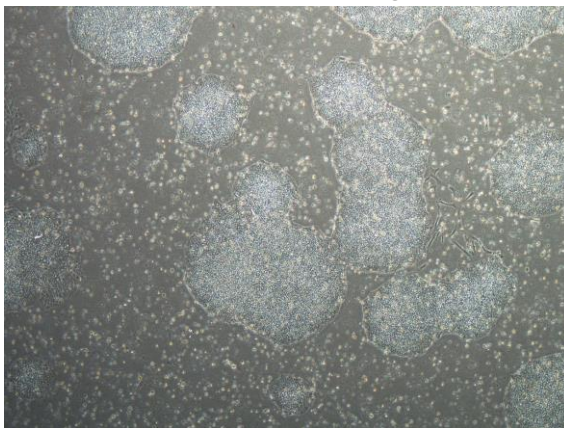


【 CiRA-j-1209 】 Morphology of iPSC colonies

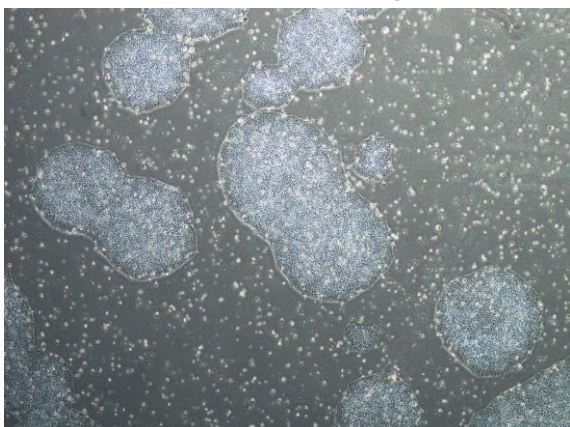
CiRA-j-1209-A: passage-3



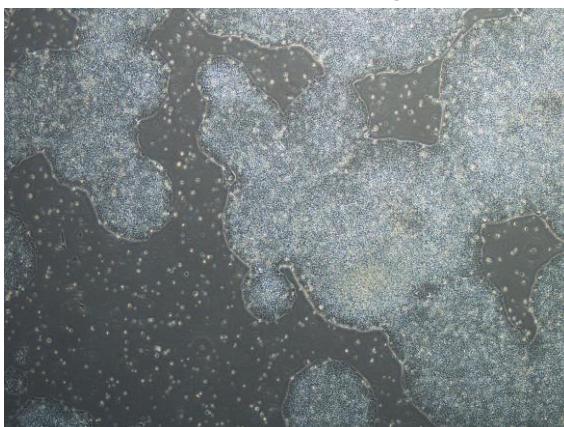
CiRA-j-1209-B: passage-3



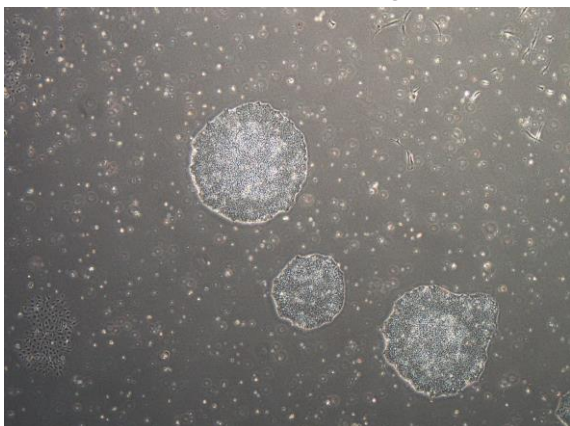
CiRA-j-1209-C: passage-3



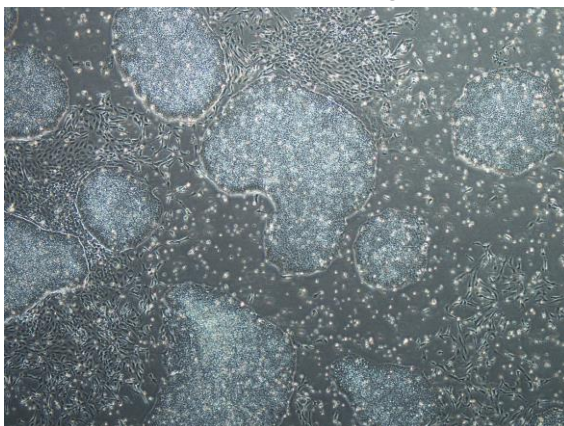
CiRA-j-1209-D: passage-3



CiRA-j-1209-E: passage-3



CiRA-j-1209-F: passage-3



(All images were captured at 4x magnification)